

# Boots & Bling



Central Texas  
**2023 Excellence  
in Construction®**  
Awards

PRESENTING AWARDS FOR  
Excellence in Construction  
Chapter Safety Award of Excellence  
National STEP  
Bob & Peggy Duda Chairperson

26 OCTOBER 2023 | BULLOCK TEXAS STATE HISTORY MUSEUM | AUSTIN, TX

# Welcome

## FROM THE PRESIDENT



Welcome to the 2023 ABC Boots & Bling Excellence in Construction and Safety Awards Banquet! We love celebrating our members and tonight is no exception! This evening ABC is honoring the Central Texas Excellence in Construction winners, Chapter Safety Awards of Excellence, Safety Training and Evaluation Process (STEP) recipients, Bob and Peggy Duda Chairperson Award, and recognizing those that made significant contributions to our chapter.

The Excellence in Construction Award has two levels, top honor being the EIC Award of Excellence, and the next level being the EIC Award of Merit. The coveted trophy is an impressive statue of an American eagle. The EIC strives to honor those who uphold a dedication to building projects safely and for the betterment of Central Texas. I want to make it a point to say that while there are two levels for EIC, every project has met a minimum judging threshold, and all are examples of excellence in our industry.

As the President of ABC Central Texas, on behalf of our Board of Directors and our staff, thank you for your ongoing and continuous support of ABC. Without the support of its members, no association can survive, let alone strive to provide the resources, representation, education and information that its members expect. My door is always open at ABC and I welcome your input and suggestions as we move into the coming year.

Please enjoy tonight's celebration, drink responsibly and drive home safely!

**Crystal Smith**



# *Schedule of Events*

**WELCOME**

**PLEDGE OF ALLEGIANCE**

**INVOCATION**

**RECOGNITION OF  
HONORED GUESTS**

**DINNER SERVED**

**PRESENTATION OF  
AWARDS**

2023 STEP Recipients

Chapter Safety Awards of Excellence

Bob and Peggy Duda Chairperson Award

Excellence in Construction Merit Awards

Excellence in Construction Eagle Awards

**AFTER PARTY IN THE ROTUNDA**



# Special Guest



## **MICHAEL BELLAMAN** **President and CEO**

Associated Builders and Contractors

Mike Bellaman has served as president and chief executive officer of Associated Builders and Contractors, a national trade association representing more than 22,000 members from 68 chapters across the United States, since 2011. He leads the association to deliver on the following long-term strategic goals:

- Establish ABC members as the world-class standard for total human health, safety and environment;
- Increase the political influence of ABC;
- Be the leading force for workforce development and education; and
- Continuously grow and deliver value to a diverse and committed membership.

Under his leadership, ABC has deployed a five-year, association-wide strategic planning framework to align all chapters and members. Over the last decade, it has led to such results as growing contractor membership by 7%, increasing the number of fair and open competition states by 1,100% and the number of right-to-work states by 22%, and expanding Free Enterprise Alliance fundraising by 200%. In 2021 alone, ABC members invested \$1.6 billion to provide 1.3 million course attendees with craft, leadership and safety education.

Bellaman is dedicated to helping ABC members and the entire construction industry achieve world-class safety. He is a co-founder of the Construction Coalition for a Drug- and Alcohol-Free Workplace and has championed a roadmap for companies whose leaders want to transform their safety programs through ABC's STEP Safety Management System, which has grown participation by nearly 42% and has decreased total recordable incident rates among participants by 58% under his leadership.

A 1985 graduate of Pennsylvania State University, Bellaman earned a bachelor's in architectural engineering and spent more than two decades in the construction industry before joining ABC.





# 2023 Board of Directors

## CHAIRMAN

**Eric Gribble**  
DPR Construction

## FIRST VICE CHAIR

**J Foster**  
Marsh McLennan Agency

## SECOND VICE CHAIR & SECRETARY

**Rita Conner**  
360 Electrical

## TREASURER

**Hugh Ayles**  
Rogers-O'Brien Construction

## IMMEDIATE PAST CHAIR

**Nat Peniston**  
The Contractors Plan

**Laura Gautreau**  
TDIndustries

**Preston Flynn**  
Flynn Construction

**Shelly Masters**  
Cokinos | Young

**Ryan Ritchie**  
ChalkLine Construction

**Clayton Utkov**  
Andrews Myers

**Louis Wylor**  
Bergelectric



# Past Chairpersons

<b>1976</b>	Larry Nelson	<b>2000</b>	Robert K. Farmer
<b>1977</b>	Larry Nelson	<b>2001</b>	Kirk Kistner
<b>1978</b>	Larry Zunker	<b>2002</b>	Rick Hull
<b>1979</b>	Jim Akin – Deceased 1995	<b>2003</b>	Joel Stone
<b>1980</b>	Gil Johnson	<b>2004</b>	Sharon McGee
<b>1981</b>	Dan Palmer	<b>2005</b>	Bob Richards
<b>1982</b>	Edis Olive	<b>2006</b>	Jeff Hagar
<b>1983</b>	Hal Brown	<b>2007</b>	Sam Kumar
<b>1984</b>	Steve Schutze	<b>2008</b>	David Nelson
<b>1985</b>	Clark Lillie	<b>2009</b>	Chuck Swallow
<b>1986</b>	Dee Lindley	<b>2010</b>	Bryan Lofton
<b>1987</b>	Tom Ridout	<b>2011</b>	Jeff Hager
<b>1988</b>	Mary McDonald	<b>2012</b>	Shelly Masters
<b>1989</b>	Neel White	<b>2013</b>	Dutch DeHart
<b>1990</b>	Larry Richardson	<b>2014</b>	Barry Wurzel
<b>1991</b>	Bill Clawson	<b>2015</b>	Jason Beers
<b>1992</b>	Russell Garner	<b>2016</b>	David Smith
<b>1993</b>	Ken Cousins	<b>2017</b>	Corey Taylor
<b>1994</b>	Rae Nell Brown	<b>2018</b>	Sergio Montoya
<b>1995</b>	Gary Marion	<b>2019</b>	Ryan Krogstad
<b>1996</b>	Robert G. Duda	<b>2020</b>	Jesse Beckett
<b>1997</b>	Beth Selbe Lassita	<b>2021</b>	Ryan Ritchie
<b>1998</b>	Alex Gregg	<b>2022</b>	Nat Peniston
<b>1999</b>	Michael Sireno		



# 2023 STEP Recipients

Safety Training Evaluation Program (STEP) Awards recognize outstanding performance in safety, proven by statistics and evaluations.

360 Electrical Contractors, Inc.	Kennedy Wire Rope & Sling Co., Inc.
Alpha Building Corporation	Kitchell Contractors, Inc.
American Constructors	Live Oak Construction
Austin Commercial, LP	Lott Brothers Construction Company
Bartlett Cocke General Contractors, LLC	MAPP, LLC
Beckett Electrical Services	Marek Brothers Systems, LLC
Bergelectric Corp.	Metropolitan Contracting Co., LLC
BETCO Scaffolds	MK Marlow Company, LLC
Big D Metalworks	MMR Constructors, Inc.
Brasfield & Gorrie, LLC	MW Builders, Inc.
Cadence McShane Construction Co. LLC	QA Construction Service, Inc.
Capital Industries	Reinforced Structures, Inc.
Chamberlin Roofing and Waterproofing	Rogers-O'Brien Construction Company
DPR Construction	Rudick Construction Group
EBCO General Contractor Ltd	Satterfield & Pontikes Construction, Inc.
Falkenberg Construction Company, Inc.	S.I. Mechanical
Fast Track Specialties, LP	Streamline Roofing LLC
Field Control Analytics	Structure Tone Southwest LLC
F. L. Crane & Sons, Inc.	Swinerton
Flintco, LLC	TDIndustries, Inc.
Flynn Construction, Inc.	United Rentals, Inc.
GMI	Weifield Group Contracting Texas, LLC
Joeris General Contractors, Ltd.	White Construction Company
Harvey-Cleary Builders	



Central Texas  
2023 Excellence  
in Construction<sup>®</sup>  
Awards

# 2023 Chapter Safety

## AWARDS OF EXCELLENCE

---

The Chapter Safety Awards acknowledge superior safety performance, supported by a company's commitment to safety and safety training.

### GENERAL CONTRACTORS

American Constructors  
DPR Construction  
EBCO General Contractor LTD.  
Flynn Construction, Inc.  
Harvey | Harvey-Cleary  
Swinerton  
White Construction Company

### SPECIALTY CONTRACTORS

Austin Sales & Scaffold  
Beckett Electrical Services  
Capital Industries  
Chamberlin Roofing & Waterproofing  
Lasco Acoustics & Drywall Inc- Austin  
Reinforced Structures, Inc  
Weifield Group Contracting Texas LLC



Central Texas  
2023 Excellence  
in Construction  
Awards

# National Recognition

## TOP PERFORMER 2023

Alpha Building Corporation  
Austin Commercial, LP  
Bergelectric Corp.  
Big D Metalworks  
Brasfield & Gorrie, LLC  
Cadence McShane Construction Company, LLC  
Chamberlin Roofing & Waterproofing  
E.L. Crane & Sons, Inc.  
Fast Track Specialties, LP  
Flintco, LLC  
Lasco Acoustics & Drywall, Inc.  
Lott Brothers Construction Co., Ltd.  
MAPP, LLC  
Marek Brothers Systems, LLC  
Metropolitan Contracting Co., LLC  
QA Construction Services, Inc.  
TDIndustries, Inc.  
White Construction Co.

## ACCREDITED QUALITY CONTRACTOR 2022 & 2023

Alpha Building Corporation  
Austin Commercial, LP  
Bergelectric Corp.  
Big D Metalworks  
Brasfield & Gorrie, LLC  
Cadence McShane Construction Company, LLC  
Chamberlin Roofing & Waterproofing  
E.L. Crane & Sons, Inc.  
Fast Track Specialties, LP  
Flintco, LLC  
Lasco Acoustics & Drywall, Inc.  
Lott Brothers Construction Co., Ltd.  
MAPP, LLC  
Marek Brothers Systems, LLC  
Rogers-O'Brien Construction Co.  
Swinerton  
TDIndustries, Inc.  
White Construction Co.



THANK YOU TO OUR  
*Honored Guest*



**THE HONORABLE  
DUSTIN BURROWS**  
Texas House of Representatives



Central Texas  
2023 Excellence  
in Construction  
Awards

ABC CENTRAL TEXAS EXCELLENCE IN CONSTRUCTION AWARDS

# Bob & Peggy Duda

## CHAIRPERSON AWARD

---



**J FOSTER**

Marsh McLennan Agency



Central Texas  
2023 Excellence  
in Construction®  
Awards

ABC CENTRAL TEXAS EXCELLENCE IN CONSTRUCTION AWARDS



# MERIT AWARD WINNERS



## **SPECIALTY CONTRACTOR ELECTRICAL COMMERCIAL:**

\$2 to \$10 Million

### **ABOUT THE PROJECT**

This project was comprised of an addition of 262,000 SF to the existing cold storage perishables warehouse facility for H-E-B. Also, 7,072 SF receiving offices and 44,000 SF administration space. One of eight H-E-B projects Weifield assisted with.

### **CONTRACTOR**

Weifield Group Contracting Texas

### **PROJECT NAME**

H-E-B Temple Cold Storage Facility

### **LOCATION**

Temple, TX

### **OWNER**

H-E-B Grocery Company

### **GENERAL CONTRACTOR**

Ryan Companies

### **ENGINEER**

Summit MEP

### **ABC MEMBERS**

1

## **SPECIALTY CONTRACTOR ELECTRICAL COMMERCIAL:**

\$2 to \$10 Million

### **ABOUT THE PROJECT**

The Loren at Lady Bird Lake is a mixed-use facility that consists of a hotel, condominium, restaurant, and two levels of below-grade parking—265,000 Total SF.

### **CONTRACTOR**

Bergelectric Corp.

### **PROJECT NAME**

The Loren at Lady Bird Lake

### **LOCATION**

Austin, TX

### **OWNER**

C12 Capital

### **ARCHITECT**

Rhode Partners

### **ENGINEER**

Blum Consulting Engineers

### **ABC MEMBERS**

5





**SPECIALTY  
CONTRACTOR  
ELECTRICAL ALL  
PROJECTS OVER \$10  
MILLION:**

More Than \$10 Million

**ABOUT THE PROJECT**

The State of Texas, through its Texas Facilities Commission, has reimaged the Capitol Complex in downtown Austin.

**CONTRACTOR**

Bergelectric Corp.

**PROJECT NAME**

Texas Facilities Commission Package 5

**LOCATION**

Austin, TX

**OWNER**

Balfour Beatty

**GENERAL CONTRACTOR**

White Construction

**ARCHITECT**

Kirksey Architecture

**ENGINEER**

Encotech Engineering Consultants

**ABC MEMBERS**

5

**GENERAL  
CONTRACTOR  
COMMERCIAL:**

Less than \$5 Million

**ABOUT THE PROJECT**

Structure Tone Southwest successfully renovated over 45,000sf of office space for Epicor. The project included an executive conference suite, open workspaces, and collaboration areas as well as a full-height LED wall and actual Formula 1 racecar in the lobby.

**CONTRACTOR**

Structure Tone Southwest

**PROJECT NAME**

Epicor

**LOCATION**

Austin, TX

**OWNER**

Epicor

**ARCHITECT**

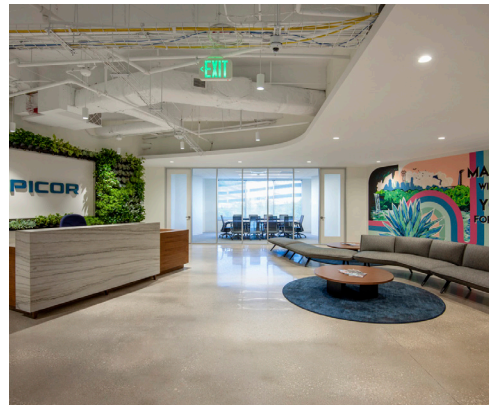
Gensler

**ENGINEER**

Bay & Associates

**ABC MEMBERS**

1



# MERIT AWARD WINNERS



## GENERAL CONTRACTOR INDUSTRIAL:

Less Than \$5 Million

### ABOUT THE PROJECT

This project consisted of the rehabilitation of an industrial complex that was damaged by the March 2022 Tornado Outbreak. Several buildings were affected, and required repairs to structural elements, MEP systems, glass storefronts, roofing material, exterior wall panels, and utilities.

### CONTRACTOR

Metropolitan Contracting Company, LLC

### PROJECT NAME

Parker Industrial Tornado Rehabilitation

### LOCATION

Austin, TX

### OWNER

Link Logistics

### ABC MEMBERS

3

## GENERAL CONTRACTOR INDUSTRIAL:

\$5 to \$15 Million

### ABOUT THE PROJECT

This project has 7 Buildings with a total of 77,690 SF. There are 3 different size and layouts between the buildings. They have a modern design allowing for flexibility to customize and add space for future tenants and owners.

### CONTRACTOR

Lott Brothers Construction Company, Ltd.

### PROJECT NAME

Panther Commercial Park

### LOCATION

Pflugerville, TX

### OWNER

Panther Commercial Park, LLC

### ARCHITECT

Mauldin Architects

### ENGINEER

Manhard Consulting

### ABC MEMBERS

1





## GENERAL CONTRACTOR HEALTH CARE:

Less Than \$10 Million

### ABOUT THE PROJECT

Multiple Health Care Facilities, built across a multi-jurisdictional region. All 13 project locations were completed on time and under budget. Attention to detail, and constant communication with our out-of-town owners were our keys to success on this project.

### CONTRACTOR

Metropolitan Contracting Company, LLC

### PROJECT NAME

Next Level Urgent Care

### LOCATION

Bee Cave, TX

### OWNER

Next Level Medical, LLC

### ARCHITECT

Browne McGregor Architects, Inc.

### ABC MEMBERS

8

## GENERAL CONTRACTOR HEALTH CARE:

\$10 to \$25 Million

### ABOUT THE PROJECT

CCMC project was an addition being added to the current hospital and connecting them, as well as some demolition work and parking added. There were many unknowns with this project and unique challenges that caused extensive collaboration with the owners.

### CONTRACTOR

Lott Brothers Construction Company, Ltd.

### PROJECT NAME

Coleman County Medical Center

### LOCATION

Coleman, TX

### OWNER

Coleman County Medical Center District

### ARCHITECT

Rees Associates

### ENGINEER

JQ Engineering

### ABC MEMBERS

1





# MERIT AWARD WINNERS



## GENERAL CONTRACTOR INSTITUTIONAL:

\$10 to \$25 Million

### ABOUT THE PROJECT

The Trinity Episcopal Performing Arts building is a beautiful addition to the Trinity campus and architecturally compliments the existing campus. The building includes a performing arts wing for theatre, music, dance and a new gymnasium with athletic locker rooms.

### CONTRACTOR

Flynn Construction, Inc.

### PROJECT NAME

Trinity Episcopal School Community Building

### LOCATION

Westlake, TX

### OWNER

Trinity Episcopal School

### ARCHITECT

Page

### ABC MEMBERS

9

## GENERAL CONTRACTOR INSTITUTIONAL:

\$25 to \$100 Million

### ABOUT THE PROJECT

The project is a new design-build middle school located in Austin, Texas. This project faced a nearly one-year delay and faced many challenges due to time and budget restraints. The project scope is over 130,000 square feet.

### CONTRACTOR

Joeris General Contractors

### PROJECT NAME

Austin ISD Dr. General Marshall Middle School

### LOCATION

Austin, TX

### OWNER

Austin Independent School District

### ARCHITECT

LPA Design Studios

### ENGINEER

Encotech Engineering Consultants

### ABC MEMBERS

2





## GENERAL CONTRACTOR INSTITUTIONAL:

\$25 to \$100 Million

### ABOUT THE PROJECT

This new elementary school in northern Leander was built to accommodate fast growth from large subdivisions in the area surrounding the campus. Students and staff enjoy a neighborhood learning model with ample spaces for specialized instruction.

### CONTRACTOR

American Constructors

### PROJECT NAME

Carol Ann North Elementary School

### LOCATION

Leander, TX

### OWNER

Leander ISD

### ARCHITECT

O'Connell Robertson

### ENGINEER

Pickett, Kelm & Associates, Inc.

### ABC MEMBERS

3

## GENERAL CONTRACTOR INSTITUTIONAL:

\$25 to \$100 Million

### ABOUT THE PROJECT

This 103,275 square foot facility features 50 classroom spaces, a gym, cafeteria, library, and community space, and outdoor learning areas. American Constructors built the project while keeping the original Hornsby Dunlap Elementary School fully operational.

### CONTRACTOR

American Constructors

### PROJECT NAME

Hornsby-Dunlap Elementary School

### LOCATION

Del Valle, TX

### OWNER

Del Valle ISD

### ARCHITECT

Pfluger Architects

### ENGINEERS

Datum Engineers

### ABC MEMBERS

3



# MERIT AWARD WINNERS



**GENERAL CONTRACTOR  
MEGA-PROJECTS ALL  
PROJECTS OVER \$100  
MILLION COMMERCIAL:**  
\$100 to \$200 Million

## **ABOUT THE PROJECT**

Designed and built by Ryan Companies, the Thompson/Tommie Hotels and Sienna Residences (5th & Brazos) feature a new 32-story hospitality and residential tower, introducing exciting new culinary, entertainment and cultural experiences that create a vibrant Downtown Austin destination.

## **CONTRACTOR**

Ryan Companies US, Inc.

## **PROJECT NAME**

Thompson/Tommie Hotels & Sienna Residences at the Thompson

## **LOCATION**

Austin, TX

## **OWNER**

Magellan Development

## **ARCHITECT**

BKL Architecture

## **ENGINEER**

Magnusson Klemencic Associates | MKA

## **ABC MEMBERS**

13

*Congratulations*  
**AWARD WINNERS!**



# EAGLE AWARD WINNERS



## **SPECIALTY CONTRACTOR INTERIORS ACOUSTICAL, DRYWALL, MILLWORK OR PLASTER:**

All contract amounts

### **ABOUT THE PROJECT**

The Mark at Austin, a 17-story luxury student housing development that replaced the iconic 50-year-old University Towers. The student housing consists of 265 units, 965 bedrooms, totaling 328,261 SF and 36,022 SF in amenities.

### **CONTRACTOR**

GMi

### **PROJECT NAME**

The Mark at Austin

### **LOCATION**

Austin, TX

### **OWNER**

Landmark Construction, LLC

### **ARCHITECT**

Humphreys & Partners Urban Architects, L.P.

### **ENGINEER**

PK Associates

### **ABC MEMBERS**

4

## **SPECIALTY CONTRACTOR MECHANICAL COMMERCIAL:**

Less Than \$2 Million

### **ABOUT THE PROJECT**

Replacement of a 930-ton Absorption Chiller at the Austin Energy Mueller Energy Plant serving the Dell Children's Hospital in Austin, Texas. The custom absorption chiller provides critical cooling for the hospital and arrived 3 months late from India.

### **CONTRACTOR**

Capital Industries, LLC

### **PROJECT NAME**

Austin Energy – Mueller Plant – Absorption Chiller Replacement

### **LOCATION**

Austin, TX

### **OWNER**

Austin Energy

### **ARCHITECT**

Austin Energy

### **ENGINEER**

Austin Energy

### **ABC MEMBERS**

0



# EAGLE AWARD WINNERS



## **SPECIALTY CONTRACTOR ELECTRICAL COMMERCIAL:**

\$2 to \$10 Million

### **ABOUT THE PROJECT**

The new Austin Hyatt Centric is located steps from the historic Paramount Theatre, conveniently situated at the corner of Congress Avenue and Eighth Street in Austin, TX.

### **CONTRACTOR**

Bergelectric Corp.

### **PROJECT NAME**

Hyatt Centric

### **LOCATION**

Austin, TX

### **OWNER**

McWhinney

### **ARCHITECT**

Nelsen Partners

### **ENGINEER**

Blum Consulting Engineers

### **ABC MEMBERS**

5

## **GENERAL CONTRACTOR SPECIAL PROJECTS:**

\$2 to \$100 Million

### **ABOUT THE PROJECT**

Mueller Southeast Greenway Park included the site development of 7 acres and the construction of a world class skate park and two-mile-long walking path. The park has transformed and rejuvenated an older area of Austin with new life.

### **CONTRACTOR**

Flynn Construction, Inc.

### **PROJECT NAME**

Mueller Southeast Greenway Skate Park

### **LOCATION**

Austin, TX

### **OWNER**

Catellus Austin, LLC.

### **ARCHITECT**

RVi Planning + Landscape Architecture

### **ABC MEMBERS**

1





## GENERAL CONTRACTOR RENOVATION:

\$10 to \$100 Million

### ABOUT THE PROJECT

This multi-phased project on an occupied campus modernized Killeen High School. The project included construction of classrooms, athletics, and fine arts additions. The campus also received extensive interior renovations and site improvements.

### CONTRACTOR

American Constructors

### PROJECT NAME

Killeen High School Modernization

### LOCATION

Killeen, TX

### OWNER

Killeen ISD

### ARCHITECT

PBK Architects

### ENGINEER

Walker Partners

### ABC MEMBERS

1

## GENERAL CONTRACTOR COMMUNITY/PUBLIC SERVICE (GC):

All contract amounts up to \$100 Million

### ABOUT THE PROJECT

Helping Hand Home for Children East Campus included selective demolition and construction of a new 14,750 sf multi-purpose facility and four wood-framed residential buildings totaling 11,360 sf to provide congregate living spaces for children and caretakers.

### CONTRACTOR

White Construction

### PROJECT NAME

Helping Hand Home Expansion East Campus

### LOCATION

Austin, TX

### OWNER

Helping Hand Home

### ARCHITECT

STG Design

### ABC MEMBERS

2



# EAGLE AWARD WINNERS



## **GENERAL CONTRACTOR COMMERCIAL:**

Less Than \$5 Million

### **ABOUT THE PROJECT**

This beautiful new bank for Citizens National Bank in downtown Round Rock, TX features a masonry and cast stone exterior that blends with the historical aesthetic of the downtown district, unique architectural finishes, and high quality craftsmanship.

### **CONTRACTOR**

EBCO General Contractor Ltd

### **PROJECT NAME**

Citizens National Bank

### **LOCATION**

Round Rock, TX

### **OWNER**

Citizens National Bank

### **ARCHITECT**

Spencer-Pierce Architecture + Interiors Inc

### **ENGINEER**

Hagood Engineering Associates Inc

### **ABC MEMBERS**

8

## **GENERAL CONTRACTOR COMMERCIAL:**

\$25 to \$100 Million

### **ABOUT THE PROJECT**

The 1401 Philomena at Mueller project features a new, 5-story tilt-up medical office building with an impressive architecturally exposed concrete exterior. It sets a benchmark for tilt-wall buildings, incorporating complex designs with multiple formliners and limited paint, elevating construction excellence.

### **CONTRACTOR**

Rogers-O'Brien Construction

### **PROJECT NAME**

1401 Philomena at Mueller

### **LOCATION**

Austin, TX

### **OWNER**

Gemdale USA Corporation

### **ARCHITECT**

STG Design

### **ENGINEER**

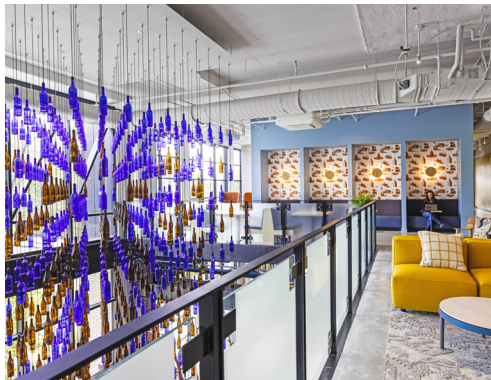
Datum Engineers

### **ABC MEMBERS**

4







**GENERAL CONTRACTOR  
COMMERCIAL:**  
\$10 to \$25 Million

**ABOUT THE PROJECT**

Atlassian is a five-story, 136,580 SF, interior build-out. The open office features meeting rooms, breakrooms, collaboration/lounge spaces, full kitchen, and a hidden game room. The 11-month project was completed on-time, on-budget, and with zero first aids and recordables.

**CONTRACTOR**  
Harvey | Harvey-Cleary

**PROJECT NAME**  
Atlassian

**LOCATION**  
Austin, TX

**OWNER**  
Atlassian

**ARCHITECT**  
Mithun

**ENGINEER**  
Bay & Associates

**ABC MEMBERS**  
6

**GENERAL CONTRACTOR  
COMMERCIAL:**  
\$5 to \$10 Million

**ABOUT THE PROJECT**

The project consisted of a 37,000 square foot first generation office fit-out including open collaborative areas, a kitchen, and communal and gathering spaces.

**CONTRACTOR**  
Turner Construction Company

**PROJECT NAME**  
Canva Austin Office

**LOCATION**  
Austin, TX

**OWNER**  
Canva

**ARCHITECT**  
Sixth River Architects

**ENGINEER**  
AMPED mep, LLC

**ABC MEMBERS**  
5



# EAGLE AWARD WINNERS



## GENERAL CONTRACTOR MEGA-PROJECTS ALL PROJECTS OVER \$100 MILLION INSTITUTIONAL:

\$100 to \$200 Million

### ABOUT THE PROJECT

The State of Texas has reimagined the capitol complex in downtown Austin. Its Master Plan features the state's iconic pink granite capitol as its anchor and is characterized by grand civic spaces, shaded pedestrian-friendly streets, and connections to the community.

### CONTRACTOR

White Construction

### PROJECT NAME

Texas Capitol Complex Barbara Jordan Building, Texas Mall, and Parking Garage

### LOCATION

Austin, TX

### OWNER

Texas Facilities Commission

### ARCHITECT

Page / Southerland Page, Inc. and Kirksey Architecture

### ENGINEER

Ensignt Haynes Whaley, Quiddity, Wylie Consulting Engineers, Encotech, Sasaki, Coleman

### ABC MEMBERS

10

## GENERAL CONTRACTOR MEGA-PROJECTS ALL PROJECTS OVER \$200 MILLION INSTITUTIONAL:

Over \$200 Million

### ABOUT THE PROJECT

The Phase I, 14-story, 1.25 million SF, George H. W. Bush State Office Building named for the 41st U.S. President, includes 603,000 SF of Office and 1,665 parking spaces above and below grade, standing at the gateway to the reimagined Texas Capitol Complex.

### CONTRACTOR

Flintco, LLC

### PROJECT NAME

George H. W. Bush State Office Building

### LOCATION

Austin, TX

### OWNER

Texas Facilities Commission

### ARCHITECT

HKS, Inc

### ENGINEER

Martinez Moore Engineers

### ABC MEMBERS

4





**GENERAL CONTRACTOR  
MEGA-PROJECTS ALL  
PROJECTS OVER \$200  
MILLION COMMERCIAL:**  
Over \$200 Million

**ABOUT THE PROJECT**

Block 185 is a Class A, 35-story office tower, totaling approximately 1.5 million gross-sq.-ft with a striking sail-like curtainwall design capitalizing on views of Lady Bird Lake, and a parking structure spanning six levels below grade and 10 above.

**CONTRACTOR**  
DPR Construction

**PROJECT NAME**  
Green Water Block 185

**LOCATION**  
Austin, TX

**OWNER**  
Trammel Crow Company

**ARCHITECT**  
Pelli Clarke & Partners (Design Architect)  
| STG Design (AOR/Sustainability Lead)

**ENGINEER**  
Thornton Tomasetti

**ABC MEMBERS**  
2

*Congratulations*  
**AWARD WINNERS!**



# Thank You

## TO OUR JUDGES

---

### CHAPTER SAFETY AWARD OF EXCELLENCE

**Brandon Berryhill**

SR Trident

**Steve Brown**

FL Crane

**Rick Mulkey**

ABC Nebraska/South Dakota Chapter

**Lane Smith**

Freedom Solar Power

### EIC BUILDING AWARDS

**Rick Baysinger**

Consultant

**Rita Conner**

360 Electrical Contractors

**Terry Fisher**

MMR Constructors

**Somik Ghosh**

University of Oklahoma

**Patrick Mulry**

Griffin Davison

**Joy Smith**

Construction Lending Advisors

**Ging Sobharaksha**

Consultant

**Jim Wiley**

CSL Plasma

**Madeleine Williams**

MEMCO

**Michael Williams**

Seven Generations Architecture + Engineering  
(Part of Bodwé Professional Services Group)

# Thank You

## TO OUR ANNUAL SPONSORS

---

### Elite



---

### Premier



*Thank You*

TO OUR SPONSORS

LONE STAR SPONSOR



COCKTAIL RECEPTION SPONSOR



SAFE RIDE HOME SPONSOR



SAFETY AWARD SPONSOR



AWARD DISPLAY SPONSOR



PROGRAM SPONSOR

